



Tecumseh

Kompressor
Spannungscode : FZ

AJ5512C-FZ

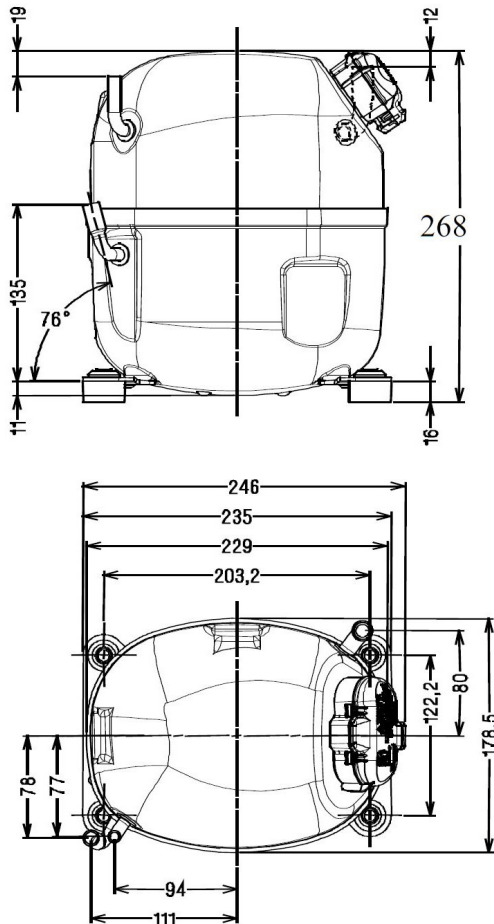
Klimabereich (CA)

220 - 240V 1~ 50 Hz

R407C

AJ5512C-FZ3C

| Bedingungen | Frequenz | Nennkälteleistung | | Schalleistung ISO3745 / ISO 3743-1 |
|-----------------|----------|-------------------|-------|---------------------------------------|
| | | Watts | BTU/h | |
| CECOMAF / R407C | 50 Hz | 2381 | 8119 | 62 dBA |



| | |
|----------------------------|--------------------|
| Hubvolumen (cm³) | 21,75 |
| Nettogewicht (kg) | 18.2 |
| Ölmenge (cm³) | 475.0 |
| Ölsorte | P.O.E |
| Expansion | Kapillare |
| Kühlung | Belüftet |
| Hauptphase (Ohm) | 2.33 |
| Hilfsphase (Ohm) | 11.3 |
| Strom | |
| Nennstrom (A) | 5.9 |
| Maximalstrom (A) | 9.3 |
| Anlaufstrom (A) | 28 |
| Typ Schaltanlage | PTCSCR,CSR,PSC |
| Schutz | MST18AJW |
| Verzögerung | 2.8s - 5.2s / 28 A |
| Öffnungs-Temp. | 135° C |
| Schließ-Temp. | 61° C |
| Optional | / |
| Anlaufkondensator | 21 µF / 330 V |
| Betriebskondensator | 15 µF / 400 V |
| Potenzialrelais | RVA4G** |
| Einschaltung | 180/195V |
| Ausschaltung | 40/105V |
| Optional | 3ARR3*6AS* |
| Außendurchmesser | |
| Ø Saugleitung | 9.5 (3/8") |
| Ø Druckleitung | 6.35 (1/4") |
| Ø Prozessleitung | 6.35 (1/4") |

* CECOMAF : T°Verf. 55.0°C / T°Verdampf.. 5.0°C / T°Sauggastemp.. 32.0°C
T°Unter kühlung. 0.0K

Zulassungen :



NB: Tecumseh behält sich das Recht vor, die in diesem Dokument enthaltenen Informationen ohne vorherige Ankündigung zu verändern



Tecumseh

| | |
|-------------------|---|
| AJ5512C-FZ | Tension FZ : 220 - 240V 1~ 50 Hz |
|-------------------|---|

| | | |
|--|------------------------|---------|
| Les performances sont données dans les conditions CECOMAF : | Gaz aspirés : | 32.0 °C |
| Condition Mid | Sous refroidissement : | 0.0 K |
| The performance data are in CECOMAF conditions : | Return gas : | 32.0 °C |
| Mid Condition | Subcooling : | 0.0 K |

50 Hz R407C

N°341EG-FZ

| 4 T condensation | 5 T évaporation | (°C) | -25 | -20 | -15 | -10 | -5 | 0 | 5 | 10 | 15 |
|--------------------|--------------------|--------|-----|-----|-----|-----|------|------|------|------|------|
| 40 | 1 P frigorifique | (Watt) | | | | | 1975 | 2583 | 3273 | 4039 | 4877 |
| | 2 P absorbée | (W) | | | | | 932 | 1007 | 1066 | 1110 | 1138 |
| | 3 I absorbée | (A) | | | | | 5.07 | 5.30 | 5.57 | 5.86 | 6.17 |
| 50 | 1 P frigorifique | (Watt) | | | | | | 2081 | 2677 | 3344 | 4077 |
| | 2 P absorbée | (W) | | | | | | 1056 | 1151 | 1239 | 1320 |
| | 3 I absorbée | (A) | | | | | | 5.64 | 6.02 | 6.42 | 6.84 |
| 60 | 1 P frigorifique | (Watt) | | | | | | | 2086 | 2655 | 3284 |
| | 2 P absorbée | (W) | | | | | | | 1226 | 1355 | 1487 |
| | 3 I absorbée | (A) | | | | | | | 6.45 | 6.96 | 7.48 |

© 2022 Tecumseh Products Company
All rights reserved

1 = cooling capacity 2 = power input 3 = current 4 = condensing temperature 5 = evaporating temperature

Nota : Tecumseh se réserve le droit de modifier les informations contenues dans ce document sans préavis.

Note : Tecumseh reserves the right to change information contained in this document without notification.