



Compressor  
Voltage Code : TZ

**AJ2464P-TZ**

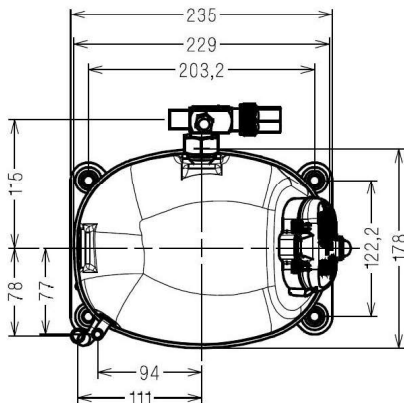
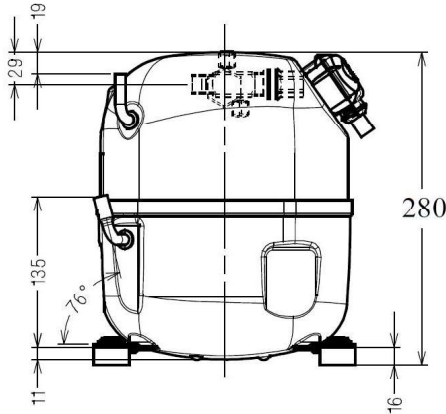
Low Temp. Commercial (BP)

400V 3~ 50Hz / 440V 3~ 60 Hz

R452A / R404A / R455A / R454C

**AJ2464P-TZ1A**

| Conditions      | Frequency     | Nominal Cooling Capacity |             | Sound Power<br>ISO3745 / ISO 3743-1 |
|-----------------|---------------|--------------------------|-------------|-------------------------------------|
|                 |               | Watts                    | BTU/h       |                                     |
| CECOMAF / R452A | 50 Hz / 60 Hz | 994 / 1103               | 3390 / 3762 | 61 dBA                              |
| CECOMAF / R404A | 50 Hz / 60 Hz | 1056 / 1171              | 3600 / 3994 | 61 dBA                              |
| CECOMAF / R455A | 50 Hz / 60 Hz | 909 / 1067               | 3101 / 3639 | 61 dBA                              |
| CECOMAF / R454C | 50 Hz / 60 Hz | 859 / 995                | 2931 / 3394 | 61 dBA                              |



|                                     |                                |
|-------------------------------------|--------------------------------|
| <b>Displacement (cc)</b>            | 34,5                           |
| <b>Net Weight (Kg)</b>              | 21.2                           |
| <b>Oil Quantity (cc)</b>            | 475.0                          |
| <b>Oil Type</b>                     | Polyolester                    |
| <b>Expansion Device</b>             | Capillary_Tube/Expansion_Valve |
| <b>Cooling</b>                      | Fan                            |
| <b>Main Winding (Ohm)</b>           | 11.8                           |
| <b>Current</b>                      |                                |
| RLA (A)                             | 2,2   2,1                      |
| MCC (A)                             | 3,8   4                        |
| LRA (A)                             | 16   16,5                      |
| <b>Electrical Equipment</b>         | TRI                            |
| <b>Overload</b>                     | Interne                        |
| <b>Refrigerating connection for</b> |                                |
| Suction Tube                        | 15.9 (5/8")                    |
| Discharge Tube                      | 7.9 (5/16")                    |
| Process Tube                        | 6.35 (1/4")                    |

\* CECOMAF : T°Cond. 55.0°C / T°Evap. -25.0°C / T°Return gas temp.. 32.0°C  
T°Subcooling. 0.0K

Certificates :



Note : Tecumseh reserves the right to change information contained in this document without notification.



**Tecumseh**

|                   |  |
|-------------------|--|
| <b>AJ2464P-TZ</b> | <b>Tension TZ : 400V 3~ 50Hz / 440V 3~ 60 Hz</b> |
|-------------------|--|

|  |                        |         |
|--|------------------------|---------|
| Les performances sont données dans les <b>conditions CECOMAF</b> : | Gaz aspirés :          | 32.0 °C |
| Condition Dew  | Sous refroidissement : | 0.0 K   |
| The performance data are in <b>CECOMAF conditions</b> :            | Return gas :           | 32.0 °C |
| Dew Condition  | Subcooling :           | 0.0 K   |

© 2024 Tecumseh Products Company  
All rights reserved

### 50 Hz R452A

**N°3610**

| 4   T condensation | 5   T évaporation  | (°C)   | -40  | -35  | -30  | -25  | -20  | -15  | -10  |
|--------------------|--------------------|--------|------|------|------|------|------|------|------|
| <b>30</b>          | 1   P frigorifique | (Watt) | 716  | 989  | 1323 | 1725 | 2203 | 2766 | 3421 |
|                    | 2   P absorbée     | (W)    | 607  | 718  | 831  | 948  | 1070 | 1198 | 1334 |
|                    | 3   I absorbée     | (A)    | 1.47 | 1.58 | 1.71 | 1.86 | 2.03 | 2.22 | 2.43 |
| <b>40</b>          | 1   P frigorifique | (Watt) |      | 793  | 1086 | 1437 | 1855 | 2349 | 2926 |
|                    | 2   P absorbée     | (W)    |      | 718  | 854  | 994  | 1139 | 1291 | 1451 |
|                    | 3   I absorbée     | (A)    |      | 1.58 | 1.75 | 1.93 | 2.14 | 2.36 | 2.60 |
| <b>50</b>          | 1   P frigorifique | (Watt) |      |      | 844  | 1141 | 1496 | 1917 | 2412 |
|                    | 2   P absorbée     | (W)    |      |      | 856  | 1021 | 1191 | 1368 | 1553 |
|                    | 3   I absorbée     | (A)    |      |      | 1.76 | 1.98 | 2.21 | 2.47 | 2.74 |
| <b>60</b>          | 1   P frigorifique | (Watt) |      |      |      | 850  | 1137 | 1482 | 1893 |
|                    | 2   P absorbée     | (W)    |      |      |      | 1029 | 1225 | 1429 | 1642 |
|                    | 3   I absorbée     | (A)    |      |      |      | 2.00 | 2.26 | 2.55 | 2.85 |

### 60 Hz R452A

**N°3610**

| 4   T condensation | 5   T évaporation  | (°C)   | -40  | -35  | -30  | -25  | -20  | -15  | -10  |
|--------------------|--------------------|--------|------|------|------|------|------|------|------|
| <b>30</b>          | 1   P frigorifique | (Watt) | 785  | 1087 | 1456 | 1900 | 2430 | 3053 | 3779 |
|                    | 2   P absorbée     | (W)    | 697  | 833  | 966  | 1102 | 1247 | 1405 | 1583 |
|                    | 3   I absorbée     | (A)    | 1.37 | 1.51 | 1.67 | 1.86 | 2.06 | 2.29 | 2.55 |
| <b>40</b>          | 1   P frigorifique | (Watt) |      | 872  | 1194 | 1582 | 2046 | 2593 | 3234 |
|                    | 2   P absorbée     | (W)    |      | 832  | 994  | 1159 | 1333 | 1521 | 1729 |
|                    | 3   I absorbée     | (A)    |      | 1.51 | 1.71 | 1.93 | 2.17 | 2.43 | 2.72 |
| <b>50</b>          | 1   P frigorifique | (Watt) |      |      | 933  | 1261 | 1655 | 2123 | 2675 |
|                    | 2   P absorbée     | (W)    |      |      | 983  | 1178 | 1381 | 1599 | 1837 |
|                    | 3   I absorbée     | (A)    |      |      | 1.71 | 1.97 | 2.24 | 2.54 | 2.85 |
| <b>60</b>          | 1   P frigorifique | (Watt) |      |      |      | 949  | 1269 | 1654 | 2113 |
|                    | 2   P absorbée     | (W)    |      |      |      | 1181 | 1414 | 1662 | 1931 |
|                    | 3   I absorbée     | (A)    |      |      |      | 1.98 | 2.28 | 2.61 | 2.96 |

1 = cooling capacity 2 = power input 3 = current 4 = condensing temperature 5 = evaporating temperature

**Nota : Tecumseh se réserve le droit de modifier les informations contenues dans ce document sans préavis.**

**Note : Tecumseh reserves the right to change information contained in this document without notification.**



**Tecumseh**

|                   |  |
|-------------------|--|
| <b>AJ2464P-TZ</b> | <b>Tension TZ : 400V 3~ 50Hz / 440V 3~ 60 Hz</b> |
|-------------------|--|

|  |                        |         |
|--|------------------------|---------|
| Les performances sont données dans les <b>conditions CECOMAF</b> : | Gaz aspirés :          | 32.0 °C |
| Condition Dew  | Sous refroidissement : | 0.0 K   |
| The performance data are in <b>CECOMAF conditions</b> :            | Return gas :           | 32.0 °C |
| Dew Condition  | Subcooling :           | 0.0 K   |

© 2024 Tecumseh Products Company  
All rights reserved

### 50 Hz R404A

**N°3611**

| 4   T condensation | 5   T évaporation  | (°C)   | -40  | -35  | -30  | -25  | -20  | -15  | -10  |
|--------------------|--------------------|--------|------|------|------|------|------|------|------|
| <b>30</b>          | 1   P frigorifique | (Watt) | 787  | 1079 | 1431 | 1850 | 2343 | 2916 | 3576 |
|                    | 2   P absorbée     | (W)    | 650  | 770  | 892  | 1015 | 1141 | 1270 | 1405 |
|                    | 3   I absorbée     | (A)    | 1.57 | 1.69 | 1.83 | 1.99 | 2.16 | 2.35 | 2.56 |
| <b>40</b>          | 1   P frigorifique | (Watt) |      | 866  | 1171 | 1532 | 1957 | 2451 | 3023 |
|                    | 2   P absorbée     | (W)    |      | 778  | 920  | 1066 | 1215 | 1369 | 1529 |
|                    | 3   I absorbée     | (A)    |      | 1.71 | 1.88 | 2.07 | 2.28 | 2.50 | 2.74 |
| <b>50</b>          | 1   P frigorifique | (Watt) |      |      | 911  | 1214 | 1570 | 1986 | 2468 |
|                    | 2   P absorbée     | (W)    |      |      | 930  | 1100 | 1274 | 1455 | 1642 |
|                    | 3   I absorbée     | (A)    |      |      | 1.91 | 2.13 | 2.37 | 2.62 | 2.89 |
| <b>60</b>          | 1   P frigorifique | (Watt) |      |      |      | 898  | 1185 | 1522 | 1916 |
|                    | 2   P absorbée     | (W)    |      |      |      | 1116 | 1318 | 1527 | 1744 |
|                    | 3   I absorbée     | (A)    |      |      |      | 2.16 | 2.43 | 2.72 | 3.02 |

### 60 Hz R404A

**N°3611**

| 4   T condensation | 5   T évaporation  | (°C)   | -40  | -35  | -30  | -25  | -20  | -15  | -10  |
|--------------------|--------------------|--------|------|------|------|------|------|------|------|
| <b>30</b>          | 1   P frigorifique | (Watt) | 864  | 1185 | 1574 | 2038 | 2584 | 3219 | 3950 |
|                    | 2   P absorbée     | (W)    | 747  | 894  | 1037 | 1180 | 1330 | 1490 | 1667 |
|                    | 3   I absorbée     | (A)    | 1.46 | 1.62 | 1.79 | 1.99 | 2.20 | 2.43 | 2.68 |
| <b>40</b>          | 1   P frigorifique | (Watt) |      | 951  | 1287 | 1687 | 2158 | 2707 | 3342 |
|                    | 2   P absorbée     | (W)    |      | 901  | 1071 | 1243 | 1422 | 1613 | 1822 |
|                    | 3   I absorbée     | (A)    |      | 1.63 | 1.84 | 2.07 | 2.31 | 2.58 | 2.86 |
| <b>50</b>          | 1   P frigorifique | (Watt) |      |      | 1006 | 1342 | 1737 | 2199 | 2737 |
|                    | 2   P absorbée     | (W)    |      |      | 1068 | 1269 | 1478 | 1700 | 1942 |
|                    | 3   I absorbée     | (A)    |      |      | 1.86 | 2.12 | 2.40 | 2.70 | 3.02 |
| <b>60</b>          | 1   P frigorifique | (Watt) |      |      |      | 1004 | 1322 | 1698 | 2138 |
|                    | 2   P absorbée     | (W)    |      |      |      | 1281 | 1521 | 1776 | 2051 |
|                    | 3   I absorbée     | (A)    |      |      |      | 2.14 | 2.46 | 2.79 | 3.14 |

1 = cooling capacity 2 = power input 3 = current 4 = condensing temperature 5 = evaporating temperature

**Nota : Tecumseh se réserve le droit de modifier les informations contenues dans ce document sans préavis.**

**Note : Tecumseh reserves the right to change information contained in this document without notification.**



**Tecumseh**

|                   |  |
|-------------------|--|
| <b>AJ2464P-TZ</b> | <b>Tension TZ : 400V 3~ 50Hz / 440V 3~ 60 Hz</b> |
|-------------------|--|

|  |                        |         |
|--|------------------------|---------|
| Les performances sont données dans les <b>conditions CECOMAF</b> : | Gaz aspirés :          | 32.0 °C |
| Condition Dew  | Sous refroidissement : | 0.0 K   |
| The performance data are in <b>CECOMAF conditions</b> :            | Return gas :           | 32.0 °C |
| Dew Condition  | Subcooling :           | 0.0 K   |

© 2024 Tecumseh Products Company  
All rights reserved

**50 Hz R455A**

**N°3323**

| 4   T condensation | 5   T évaporation  | (°C)   | -40  | -35  | -30  | -25  | -20  | -15  | -10  |
|--------------------|--------------------|--------|------|------|------|------|------|------|------|
| <b>30</b>          | 1   P frigorifique | (Watt) | 560  | 815  | 1126 | 1502 | 1950 | 2477 | 3091 |
|                    | 2   P absorbée     | (W)    | 513  | 618  | 724  | 829  | 931  | 1030 | 1124 |
|                    | 3   I absorbée     | (A)    | 1.38 | 1.48 | 1.59 | 1.72 | 1.86 | 1.99 | 2.12 |
| <b>40</b>          | 1   P frigorifique | (Watt) | 427  | 659  | 939  | 1275 | 1674 | 2145 | 2695 |
|                    | 2   P absorbée     | (W)    | 503  | 624  | 749  | 877  | 1005 | 1134 | 1261 |
|                    | 3   I absorbée     | (A)    | 1.37 | 1.48 | 1.62 | 1.78 | 1.95 | 2.12 | 2.30 |
| <b>50</b>          | 1   P frigorifique | (Watt) |      | 497  | 741  | 1032 | 1380 | 1790 | 2271 |
|                    | 2   P absorbée     | (W)    |      | 610  | 753  | 901  | 1054 | 1210 | 1368 |
|                    | 3   I absorbée     | (A)    |      | 1.47 | 1.62 | 1.81 | 2.01 | 2.23 | 2.46 |
| <b>60</b>          | 1   P frigorifique | (Watt) |      |      | 544  | 787  | 1077 | 1422 | 1830 |
|                    | 2   P absorbée     | (W)    |      |      | 734  | 901  | 1076 | 1257 | 1445 |
|                    | 3   I absorbée     | (A)    |      |      | 1.61 | 1.82 | 2.05 | 2.31 | 2.58 |

**60 Hz R455A**

**N°3323**

| 4   T condensation | 5   T évaporation  | (°C)   | -40  | -35  | -30  | -25  | -20  | -15  | -10  |
|--------------------|--------------------|--------|------|------|------|------|------|------|------|
| <b>30</b>          | 1   P frigorifique | (Watt) | 674  | 965  | 1322 | 1755 | 2272 | 2882 | 3594 |
|                    | 2   P absorbée     | (W)    | 601  | 733  | 867  | 1002 | 1138 | 1272 | 1405 |
|                    | 3   I absorbée     | (A)    | 1.27 | 1.40 | 1.55 | 1.71 | 1.90 | 2.10 | 2.32 |
| <b>40</b>          | 1   P frigorifique | (Watt) | 517  | 779  | 1098 | 1483 | 1943 | 2486 | 3123 |
|                    | 2   P absorbée     | (W)    | 580  | 729  | 885  | 1046 | 1211 | 1379 | 1549 |
|                    | 3   I absorbée     | (A)    | 1.25 | 1.40 | 1.56 | 1.75 | 1.95 | 2.18 | 2.42 |
| <b>50</b>          | 1   P frigorifique | (Watt) |      | 593  | 871  | 1206 | 1605 | 2080 | 2638 |
|                    | 2   P absorbée     | (W)    |      | 703  | 879  | 1063 | 1256 | 1455 | 1661 |
|                    | 3   I absorbée     | (A)    |      | 1.37 | 1.57 | 1.78 | 2.02 | 2.27 | 2.55 |
| <b>60</b>          | 1   P frigorifique | (Watt) |      |      | 649  | 930  | 1268 | 1671 | 2148 |
|                    | 2   P absorbée     | (W)    |      |      | 850  | 1056 | 1274 | 1502 | 1741 |
|                    | 3   I absorbée     | (A)    |      |      | 1.52 | 1.77 | 2.04 | 2.34 | 2.66 |

1 = cooling capacity 2 = power input 3 = current 4 = condensing temperature 5 = evaporating temperature

**Nota : Tecumseh se réserve le droit de modifier les informations contenues dans ce document sans préavis.**

**Note : Tecumseh reserves the right to change information contained in this document without notification.**



**Tecumseh**

|                   |  |
|-------------------|--|
| <b>AJ2464P-TZ</b> | <b>Tension TZ : 400V 3~ 50Hz / 440V 3~ 60 Hz</b> |
|-------------------|--|

|  |                        |         |
|--|------------------------|---------|
| Les performances sont données dans les <b>conditions CECOMAF</b> : | Gaz aspirés :          | 32.0 °C |
| Condition Dew  | Sous refroidissement : | 0.0 K   |
| The performance data are in <b>CECOMAF conditions</b> :            | Return gas :           | 32.0 °C |
| Dew Condition  | Subcooling :           | 0.0 K   |

© 2024 Tecumseh Products Company  
All rights reserved

### 50 Hz R454C

**N°3322**

| 4   T condensation | 5   T évaporation  | (°C)   | <b>-40</b> | <b>-35</b> | <b>-30</b> | <b>-25</b> | <b>-20</b> | <b>-15</b> | <b>-10</b> |
|--------------------|--------------------|--------|------------|------------|------------|------------|------------|------------|------------|
| <b>30</b>          | 1   P frigorifique | (Watt) | 539        | 774        | 1062       | 1410       | 1827       | 2318       | 2890       |
|                    | 2   P absorbée     | (W)    | 477        | 577        | 676        | 774        | 873        | 974        | 1077       |
|                    | 3   I absorbée     | (A)    | 1.37       | 1.46       | 1.57       | 1.70       | 1.83       | 1.96       | 2.09       |
| <b>40</b>          | 1   P frigorifique | (Watt) | 416        | 627        | 885        | 1196       | 1566       | 2004       | 2516       |
|                    | 2   P absorbée     | (W)    | 463        | 582        | 700        | 818        | 937        | 1057       | 1181       |
|                    | 3   I absorbée     | (A)    | 1.36       | 1.46       | 1.58       | 1.73       | 1.89       | 2.05       | 2.22       |
| <b>50</b>          | 1   P frigorifique | (Watt) |            | 478        | 702        | 972        | 1294       | 1676       | 2125       |
|                    | 2   P absorbée     | (W)    |            | 562        | 701        | 841        | 981        | 1124       | 1270       |
|                    | 3   I absorbée     | (A)    |            | 1.44       | 1.58       | 1.74       | 1.93       | 2.13       | 2.34       |
| <b>60</b>          | 1   P frigorifique | (Watt) |            |            | 522        | 747        | 1018       | 1342       | 1724       |
|                    | 2   P absorbée     | (W)    |            |            | 676        | 839        | 1003       | 1170       | 1341       |
|                    | 3   I absorbée     | (A)    |            |            | 1.59       | 1.77       | 1.99       | 2.23       | 2.48       |

### 60 Hz R454C

**N°3322**

| 4   T condensation | 5   T évaporation  | (°C)   | <b>-40</b> | <b>-35</b> | <b>-30</b> | <b>-25</b> | <b>-20</b> | <b>-15</b> | <b>-10</b> |
|--------------------|--------------------|--------|------------|------------|------------|------------|------------|------------|------------|
| <b>30</b>          | 1   P frigorifique | (Watt) | 618        | 885        | 1213       | 1611       | 2086       | 2647       | 3300       |
|                    | 2   P absorbée     | (W)    | 553        | 676        | 803        | 931        | 1058       | 1184       | 1307       |
|                    | 3   I absorbée     | (A)    | 1.23       | 1.36       | 1.49       | 1.65       | 1.81       | 1.99       | 2.18       |
| <b>40</b>          | 1   P frigorifique | (Watt) | 482        | 724        | 1020       | 1377       | 1803       | 2306       | 2894       |
|                    | 2   P absorbée     | (W)    | 534        | 674        | 821        | 971        | 1126       | 1282       | 1438       |
|                    | 3   I absorbée     | (A)    | 1.21       | 1.35       | 1.51       | 1.69       | 1.88       | 2.08       | 2.31       |
| <b>50</b>          | 1   P frigorifique | (Watt) |            | 555        | 814        | 1125       | 1497       | 1937       | 2455       |
|                    | 2   P absorbée     | (W)    |            | 651        | 815        | 987        | 1166       | 1351       | 1539       |
|                    | 3   I absorbée     | (A)    |            | 1.32       | 1.50       | 1.70       | 1.92       | 2.16       | 2.42       |
| <b>60</b>          | 1   P frigorifique | (Watt) |            |            | 604        | 865        | 1178       | 1552       | 1995       |
|                    | 2   P absorbée     | (W)    |            |            | 784        | 976        | 1178       | 1389       | 1608       |
|                    | 3   I absorbée     | (A)    |            |            | 1.45       | 1.68       | 1.93       | 2.20       | 2.50       |

1 = cooling capacity 2 = power input 3 = current 4 = condensing temperature 5 = evaporating temperature

**Nota : Tecumseh se réserve le droit de modifier les informations contenues dans ce document sans préavis.**

**Note : Tecumseh reserves the right to change information contained in this document without notification.**